



# Specifications

## "R" & "RX" Lanco

Landis Solutions LLC  
 360 South Church Street  
 Waynesboro, PA 17268-2610  
 Toll Free:  
 USA: +1.800.358.3500  
 Fax: +1.888.718.2922  
 Canada: +1.888.828.6340  
 e-mail: [info@Landis-Solutions.com](mailto:info@Landis-Solutions.com)

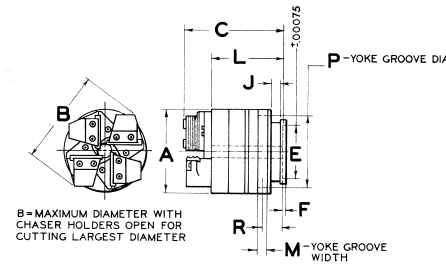
- Lanco die heads are revolving tools designed for hand-operated, semi-automatic, and automatic threading machines
- Wide range coverage for threading diameters 1/4" to 9-1/4" (6 to 235 mm)
- Heads available for standard, heavy-duty and large diameter applications and will thread up to and including Class 3 tolerances
- R Lanco Heads are for producing straight threads and "jam cutting" shorter length taper threads like NPT and BSTP
- Seven sizes to thread from 1/4" to 6", 6 to 152 mm, 1/8" to 6" nominal pipe. Oversize capacities available
- RX Lanco Heads are used to generate straight threads of relatively fine pitch and short length on large diameters
- Incorporates six chasers with a range of 1-7/8" to 9-1/4" maximum oversize range



### Specifications

	3/4" R	1" R	1-1/2" R	2-1/2" R
Range—Inches	1/4 to 3/4	1/4 to 1	3/8 to 1-1/2	1/2 to 2-1/2
Range—mm	6 to 20	6 to 24	9 to 39	12 to 64
Range—Pipe Sizes	1/8 to 3/4	1/8 to 1	1/8 to 1-1/2	1/4 to 2-1/2
Coarsest Pitch—Thds. per in.*	10	8	6	4
Coarsest Pitch—mm*	2.5	3.0	4.0	6.0
Weight—Lbs.	24-1/2	58	113-1/2	172
Weight—Kgms.	11.11	26.3	51.48	78.02

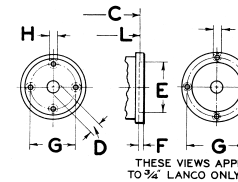
\*Coarser pitch threads can be produced dependent on thread form, material, etc. Write for details enclosing print of workpiece.



### Dimensions

Dimensions	3/4" R		1" R		1-1/2" R		2-1/2" R	
	Inches	mm	Inches	mm	Inches	mm	Inches	mm
A	5-1/8	130.2	7-3/8	187.3	9-1/8	231.8	10-7/8	276.2
B*	6-1/16	154.0	8-1/8	206.4	10-3/16	258.8	12-1/16	306.4
C*	6-3/64	153.6	6-59/64	175.8	8-19/64	210.7	9-19/32	243.7
D	7/8	22.2	1-3/8	34.9	1-15/16	49.2	2-5/8	66.7
E	3.3125	84.1	5.500	139.7	7.000	177.8	8.750	222.2
F	.505	12.8	9/32	7.1	3/8	9.5	3/8	9.5
G	3-3/4	95.2	4-3/4	120.6	5-7/8	149.2	7-1/4	184.1
H	5/16 U.N.C.		7/16 U.N.C.		9/16 U.N.C.		5/8 U.N.C.	
J	7/16	11.1	19/32	15.1	5/8	15.9	25/32	19.8
L	4-17/32	115.1	5.179	131.5	6.460	164.1	7.281	184.9
M	5/8	15.9	13/16	20.6	1.0	25.4	1-3/32	27.8
P	4-9/32	108.8	6-5/64	154.4	7-21/32	194.5	9-1/4	234.9
R	29/32	23.0	1-3/4	44.4	1-3/4	44.4	1-63/64	50.4

\*\*"B" and "C" Dimensions are based upon the use of standard, maximum range U.N.C. Chaser Holders. For correct dimension when using oversize or any other holder set, please contact Landis Engineering Department.





# Specifications

## "R" & "RX" Lanco

Landis Solutions LLC  
 360 South Church Street  
 Waynesboro, PA 17268-2610  
 Toll Free:  
 USA: +1.800.358.3500  
 Fax: +1.888.718.2922  
 Canada: +1.888.828.6340  
 e-mail: [info@Landis-Solutions.com](mailto:info@Landis-Solutions.com)



### 3/4" LANCO - Standard Chaser HoldersK

RANGE	THREAD FORM	HELIX ANGLE	CHASER SIZE	RIGHT-HAND		LEFT-HAND	
				HOLDER PART NO.	GAGE PART NO.	HOLDER PART NO.	GAGE PART NO.
1/4 to 3/4	UNC	3-1/4°	15/16 x 2-1/8	LSB060420A	LOC060179	LNS0B060421A	LOC060180
13/16 to 1-1/4	UNC	2-1/2°	15/16 x 2-1/8	LSB060422A	LOC060179	LNS0B060423A	LOC060180
1/4 to 7/16	UNF	2-1/2°	15/16 x 2-1/8	LNS0B060424B	LOC060179	LNS0B060425B	LOC060180
1/2 to 3/4	UNF	1-3/4°	15/16 x 2-1/8	LSB060426B	LOC060179	LNS0B060427B	LOC060180
7/8 to 1-1/4	UNF	1-1/2°	15/16 x 2-1/8	LSB060428B	LOC060179	LNS0B060429B	LOC060180
1/4 to 3/4	WHIT	3-1/4°	15/16 x 2-1/8	LNS0B060420C	LOC060179	LNS0B060421C	LOC060180
13/16 to 1-1/4	WHIT	2-1/2°	15/16 x 2-1/8	LNS0B060422C	LOC060179	LNS0B060423C	LOC060180
1/4 to 3/4	BSF	2-1/2°	15/16 x 2-1/8	LNS0B060424D	LOC060179	LNS0B060425D	LOC060180
13/16 to 1-1/4	BSF	2°	15/16 x 2-1/8	LNS0B060430D	LOC060179	LNS0B060431D	LOC060180
6 to 18 mm	METRIC COARSE	3-1/4°	15/16 x 2-1/8	LNS0B060420E	LOC060181	LNS0B060421E	LNSOC060182
20 to 33 mm	METRIC COARSE	2-1/2°	15/16 x 2-1/8	LNS0B060422E	LOC060181	LNS0B060423E	LNSOC060182
6 to 18 mm	METRIC FINE	2°	15/16 x 2-1/8	LNS0B060435F	LOC060181	LNS0B060439F	LNSOC060182
20 to 33 mm	METRIC FINE	1-1/2°	15/16 x 2-1/8	LNS0B060428F	LOC060181	LNS0B060429F	LNSOC060182
1/8 to 3/8	TAPER PIPE	2°	15/16 x 2-1/8	LSB060432G	LOC060185	LNS0B060433G	LNSOC060186
1/8 to 1/2	TAPER PIPE	2°	15/16 x 2-1/8	LNS0B060432G	LOC060185	-	-
1/2 to 3/4	TAPER PIPE	1-1/4°	15/16 x 2-1/8	LSB060434G	LOC060185	LNS0B060438G	LNSOC060186
1/8 to 3/8	STR. PIPE	2°	15/16 x 2-1/8	LNS0B060435H	LOC060183	LNS0B060439H	LNSOC060184
1/2 to 3/4	STR. PIPE	1-1/4°	15/16 x 2-1/8	LNS0B060436H	LOC060183	LNS0B060437H	LNSOC060184

### 1" 8R LANCO - Standard Chaser HoldersK

RANGE	THREAD FORM	HELIX ANGLE	CHASER SIZE	RIGHT-HAND		LEFT-HAND	
				HOLDER PART NO.	GAGE PART NO.	HOLDER PART NO.	GAGE PART NO.
1/4 to 1	UNC	3°	1-3/64 x 3	LSB060440A	LOC060306	LNS0B060441A	LOC060307
1/4 to 1/2	UNF	2-1/2°	1-3/64 x 3	LNS0B060442B	LOC060306	LNS0B060443B	LOC060307
9/16 to 1	UNF	1-3/4°	1-3/64 x 3	LNS0B060444B	LOC060306	LNS0B060445B	LOC060307
1/4 to 1	WHIT	3°	1-3/64 x 3	LNS0B060440C	LOC060306	LNS0B060441C	LOC060307
1/4 to 1/2	BSF	2-3/4°	1-3/64 x 3	LNS0B060446D	LOC060306	LNS0B060447D	LOC060307
9/16 to 1	BSF	2-1/4°	1-3/64 x 3	LNS0B060448D	LOC060306	LNS0B060449D	LOC060307
6 to 27 mm	METRIC COARSE	3°	1-3/64 x 3	LNS0B060440E	LOC060308	LNS0B060441E	LNSOC060309
6 to 27 mm	METRIC FINE	1-3/4°	1-3/64 x 3	LNS0B060444F	LOC060308	LNS0B060445F	LNSOC060309
1/8 to 3/4	TAPER PIPE	1-3/4°	1-3/64 x 3	LNS0B060450G	LOC060312	LNS0B060451G	LNSOC060313
1	TAPER PIPE	1°	1-1/4 x 2-3/4	LNS014884G	LOC060312	LNS019844G	LNSOC060313
1/8 to 3/4	STR. PIPE	1-3/4°	1-3/64 x 3	LNS0B060444H	LNSOC060310	LNS0B060445H	LNSOC060311
2	STR. PIPE	1°	1-3/64 x 3	LNS0B094331H	LNSOC109608	-	-



K Chaser holder and chaser setting gage numbers that have the "L" prefix indicates that they are stocked items.  
 Numbers that are preceded by the "LNS" prefix indicates that they are non-stock items.



# Specifications

## "R" & "RX" Lanco

Landis Solutions LLC

360 South Church Street  
Waynesboro, PA 17268-2610

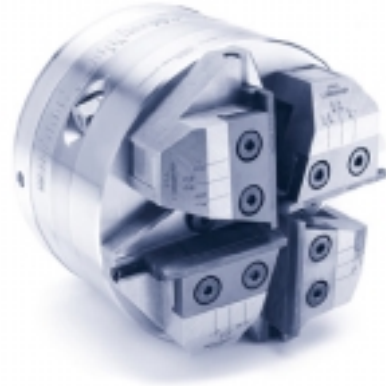
Toll Free:

USA: +1.800.358.3500

Fax: +1.888.718.2922

Canada: +1.888.828.6340

e-mail: [info@Landis-Solutions.com](mailto:info@Landis-Solutions.com)



### 2-1/2" 20R LANCO - Standard Chaser HoldersK

RANGE	THREAD FORM	HELIX ANGLE	CHASER SIZE	RIGHT-HAND		LEFT-HAND	
				HOLDER PART NO.	GAGE PART NO.	HOLDER PART NO.	GAGE PART NO.
1/2 to 1-1/2	UNC	2-1/2°	1-3/64 or 1-7/64 x 4	LSB060469A	LOC060377	LNS0B060470A	LOC060378
1-5/8 to 2-1/2	UNC	2°	1-1/2 x 5	LSB060532A	LOC060377	LNS0B060533A	LOC060378
1/2	UNF	2°	1-3/64 x 4	LNS0B060471B	LOC060377	LNS0B060472B	LOC060378
9/16 to 1	UNF	1-3/4°	1-3/64 x 4	LNS0B060473B	LOC060377	LNS0B060474B	LOC060378
1-1/8 to 1-1/2	UNF	1-1/4°	1-3/64 x 4	LNS0B060475B	LOC060377	LNS0B060476B	LOC060378
1/2 to 1-1/2	WHIT	2-1/2°	1-3/64 or 1-7/64 x 4	LNS0B060469C	LOC060377	LNS0B060470C	LOC060378
1-5/8 to 2-1/2	WHIT	2°	1-1/2 x 5	LNS0B060532C	LOC060377	LNS0B060533C	LOC060378
1/2 to 7/8	BSF	2-1/4°	1-3/64 x 4	LNS0B060477D	LOC060377	LNS0B060478D	LOC060378
1 to 1-1/2	BSF	1-3/4°	1-3/64 x 4	LNS0B060473D	LOC060377	LNS0B060474D	LOC060378
1-5/8 x 2-1/2	BSF	1-1/2°	1-3/64 or 1-7/64 x 4	LNS0B060479D	LOC060377	LNS0B060480D	LOC060378
6 to 39 mm	METRIC COARSE	2-1/2°	1-3/64 or 1-7/64 x 4	LNS0B060469E	LOC060379	LNS0B060470E	LNSOC060380
42 to 64 mm	METRIC COARSE	2°	1-1/2 x 5	LNS0B060532E	LOC060379	LNS0B060533E	LNSOC060380
12 to 16 mm	METRIC FINE	2-1/4°	1-3/64 x 4	LNS0B060477F	LOC060379	LNS0B060478F	LNSOC060380
18 to 39 mm	METRIC FINE	1-1/4°	1-3/64 x 4	LNS0B060475F	LOC060379	LNS0B060476F	LNSOC060380
42 to 64 mm	METRIC FINE	1-1/4°	1-3/64 or 1-7/64 x 4	LNS0B060544F	LOC060379	LNS0B060545F	LNSOC060380
1/4 to 3/4	TAPER PIPE	1-3/4°	1-3/64 x 4	LSB060481G	LOC060382	LNS0B060482G	LNSOC060383
1/2 to 3/4	TAPER PIPE	1-3/4°	1-3/64 x 4	LNS0B060481G	LOC060382	-	-
1 to 2	TAPER PIPE	1°	1-1/4 x 5	LSB060483G	LOC060382	LNS0B060484G	LNSOC060383
2-1/2	TAPER PIPE	3/4°	1-1/2 x 5	LNS019268G	LOC060382	-	-
2-1/2 to 3	TAPER PIPE	3/4°	1-1/2 x 5	LNS019268G2	LOC060382	-	-
1/4 to 3/4	STR. PIPE	1-3/4°	1-3/64 x 4	LNS0B060473H	LOC060534	LNS0B060474H	LNSOC060381
1 to 2	STR. PIPE	1°	1-3/64 x 4	LNS0B096389H	LOC060534	LNS0B096389H	LNSOC060381
2-1/2 to 3	STR. PIPE	3/4°	1-3/64 x 4	LNS0B095030H	LDO034698	-	-

### 1-1/2" 12R LANCO - Standard Chaser HoldersK

RANGE	THREAD FORM	HELIX ANGLE	CHASER SIZE	RIGHT-HAND		LEFT-HAND	
				HOLDER PART NO.	GAGE PART NO.	HOLDER PART NO.	GAGE PART NO.
3/8 to 1-1/2	UNC	2-3/4°	1-3/64 or 1-7/16 x 4	LSB060452A	LOC060345	LNS0B060453A	LOC060346
3/8 to 1/2	UNF	2-1/4°	1-3/64 x 4	LNS0B060454B	LOC060345	LNS0B060455B	LOC060346
9/16 to 1	UNF	1-3/4°	1-3/64 x 4	LSB060456B	LOC060345	LNS0B060457B	LOC060346
1-1/8 to 1-1/2	UNF	1-1/4°	1-3/64 x 4	LNS0B060458B	LOC060345	LNS0B060459B	LOC060346
3/8 to 1-1/2	WHIT	2-3/4°	1-3/64 or 1-7/64 x 4	LNS0B060452C	LOC060345	LNS0B060453C	LOC060346
3/8 to 7/8	BSF	2-1/2°	1-3/64 x 4	LNS0B060460D	LOC060345	LNS0B060461D	LOC060346
1 to 1-1/2	BSF	1-3/4°	1-3/64 x 4	LNS0B060456D	LOC060345	LNS0B060457D	LOC060346
6 to 39 mm	METRIC COARSE	2-3/4°	1-3/64 or 1-7/64 x 4	LNS0B060452E	LOC060347	LNS0B060453E	LOC060348
9 to 14 mm	METRIC FINE	1-3/4°	1-3/64 x 4	LNS0B060456F	LOC060347	LNS0B060457F	LOC060348
16 to 39 mm	METRIC FINE	1-1/4°	1-3/64 x 4	LNS0B060458F	LOC060347	LNS0B060459F	LOC060348
1/8 to 3/4	TAPER PIPE	1-3/4°	1-3/64 x 4	LSB060462G	LOC060351	LNS0B060463G	LNSOC060352
1/2 to 3/4	TAPER PIPE	1-3/4°	1-3/64 x 4	LNS0B060462G	LOC060351	-	-
1 to 1-1/2	TAPER PIPE	1°	1-1/4 x 4	LSB060465G	LOC060351	LNS0B060466G	LNSOC060352
1 to 2	TAPER PIPE	1°	1-1/4 x 4	LNS0B060465G2	LOC060351	-	-
1/8 to 3/4	STR. PIPE	1-3/4°	1-3/64 x 4	LNS0B060456H	LOC060349	LNS0B060457H	LNSOC060350
1 to 1-1/2	STR. PIPE	1°	1-3/64 x 4	LNS0B094821H	LOC060349	LNS0B096622H	LNSOC060350
1 to 2	STR. PIPE	1°	1-3/64 x 4	LNS0B094821H2	LOC060349	-	-

K Chaser holder and chaser setting gage numbers that have the "L" prefix indicates that they are stocked items.  
Numbers that are preceded by the "LNS" prefix indicates that they are non-stock items.





# Specifications

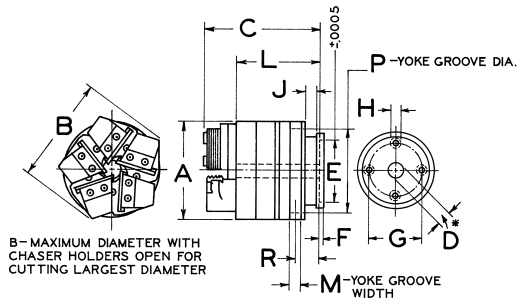
## "R" & "RX" Lanco

Landis Solutions LLC  
 360 South Church Street  
 Waynesboro, PA 17268-2610  
 Toll Free:  
 USA: +1.800.358.3500  
 Fax: +1.888.718.2922  
 Canada: +1.888.828.6340  
 e-mail: [info@Landis-Solutions.com](mailto:info@Landis-Solutions.com)

### Specifications

	4" R	6" R
Range—Inches	1 to 4	2-1/2 to 6
Range—mm	24 to 102	64 to 153
Range—Pipe Sizes	1 to 4	2-1/2 to 6
Coarsest Pitch—Thds. per in.*	3	3
Coarsest Pitch—mm*	7.5	7.5
Weight—Lbs.	465-3/4	505
Weight—Kgms.	211.26	228.07

\* Coarser pitch threads can be produced dependent on thread form, material, etc.  
 Write for details enclosing print of workpiece.



B—MAXIMUM DIAMETER WITH CHASER HOLDERS OPEN FOR CUTTING LARGEST DIAMETER

### Dimensions

Dimensions	4" R		6" R	
	Inches	mm	Inches	mm
A	15-1/2	393.7	16-1/2	419.1
B*	18-5/16	456.2	17-9/16	446.1
C*	12-15/32	316.7	12-7/32	310.3
D	4-13/16	122.24	7	177.8
E	11	279.4	11	279.4
F	3/8	9.52	3/8	9.52
G	9-3/4	247.65	9-3/4	247.65
H	5/8 U.N.C.	15.88	5/8 U.N.C.	15.88
J	15/16	23.8	31/32	24.6
L	9-19/32	243.7	9-17/32	242.1
M	1-1/2	38.1	1-1/2	38.1
P	12-7/8	327.0	14-3/8	365.1
R	2-19/32	65.9	2-17/32	64.3

\*"B" and "C" Dimensions are based upon the use of standard, maximum range U.N.C. Chaser Holders. For correct dimension when using oversize or any other holder set, please contact Landis Engineering Department.

### 4" 32R LANCO - Standard Chaser HoldersK

RANGE	THREAD FORM	HELIX ANGLE	CHASER SIZE	RIGHT-HAND		LEFT-HAND	
				HOLDER PART NO.	GAGE PART NO.	HOLDER PART NO.	GAGE PART NO.
1 to 1-1/2	UNC	2-1/2°	1-3/64 or 1-7/64 x 4	LNSOB042378A	LOC042384	LNSOB048614A	LNSOC048615
1-5/8 to 2-1/2	UNC	2°	1-1/2 x 5	LNSOB042381A	LOC042385	LNSOB047679A	LOC047681
2-5/8 to 4	UNC	1-1/2°	1-1/2 x 5	LNSOB042382A	LOC042385	LNSOB047680A	LOC047681
1/2	UNF	2°	1-3/64 x 4	LNSOB052352B	LOC042384	LNSOB052355B	LNSOC048615
9/16 to 1	UNF	1-3/4°	1-3/64 x 4	LNSOB052353B	LOC042384	LNSOB052356B	LNSOC048615
1-1/8 to 1-1/2	UNF	1-1/4°	1-3/64 x 4	LNSOB052354B	LOC042384	LNSOB052357B	LNSOC048615
1 to 1-1/2	WHIT	2-1/2°	1-3/64 or 1-7/64 x 4	LNSOB042378C	LOC042384	LNSOB048614C	LNSOC048615
1-5/8 to 3-1/2	WHIT	2°	1-1/2 x 5	LNSOB042381C	LOC042385	LNSOB047679C	LOC047681
3-3/4 to 4	WHIT	1-3/4°	2-1/4 x 5	LNSOB123020C	LNSOC123014	LNSOB060700C	LNSOC061586
1 to 1-1/2	BSF	1-3/4°	1-3/64 x 4	LNSOB052353D	LOC042384	LNSOB052356D	LNSOC048615
1-5/8 to 2-3/4	BSF	1-1/2°	1-3/64 or 1-7/64 x 4	LNSOB106566D	LNSOC067844	LNSOB096022D	LNSOC067845
3 to 4	BSF	1-1/4°	1-1/2 x 5	LNSOB095788D	LOC042385	LNSOB096002D	LOC047681
24 to 39 mm	METRIC COARSE	2-1/2°	1-3/64 or 1-7/64 x 4	LNSOB042378E	LNSOC050026	LNSOB048614E	LNSOC055899
42 to 64 mm	METRIC COARSE	2°	1-1/2 x 5	LNSOB042381E	LNSOC050027	LNSOB047679E	LNSOC051606
68 to 100 mm	METRIC COARSE	1-1/2°	1-1/2 x 5	LNSOB042382E	LNSOC061965	LNSOB047680E	LNSOC051606
1/2 to 3/4	TAPER PIPE	1-1/2°	1-3/64 x 4	LNSOB111969G	LNSOE055880	-	-
1 to 2	TAPER PIPE	1°	1-1/4 x 4	LNSOB042380G	LOC052276	-	-
2-1/2 to 4	TAPER PIPE	2/3°	2-1/4 x 5	LNSOB042383G	LOC042387	-	-
1/2 to 3/4	STR. PIPE	1-1/2°	1-3/64 x 4	LNSOB106566H	LNSOC106567	LNSOB096022H	-
1 to 2	STR. PIPE	1°	1-3/64 x 4	LNSOB052221H	LNSOC042386	LNSOB105886H	LNSOC105887
2-1/2 to 4	STR. PIPE NPSM	3/4°	3/4" 1-3/64 x 4	LNSOB052222H	LOC052223	LNSOB096058H	-
2-1/2 to 4	STR. PIPE BSPP	1/2°	1-3/64 x 4	LNSOB042379H	LOC052223	LNSOB052837H	-

K Chaser holder and chaser setting gage numbers that have the "L" prefix indicates that they are stocked items. Numbers that are preceded by the "LNS" prefix indicates that they are non-stock items.

### 6" 48R LANCO - Standard Chaser Holders Six Chasers Per Set K

RANGE	THREAD FORM	HELIX ANGLE	CHASER SIZE	RIGHT-HAND		LEFT-HAND	
				HOLDER PART NO.	GAGE PART NO.	HOLDER PART NO.	GAGE PART NO.
2-1/2 to 2-3/4	UNC	1-3/4°	1-1/2 x 5	LNSOB042006A	LNSOC041119	LNSOB050301A	LNSOC050300
2-7/8 to 4	UNC	1-1/2°	1-1/2 x 5	LNSOB039793A	LNSOC039795	LNSOB040931A	LNSOC040942
2-1/2 to 3-1/2	WHIT	2°	1-1/2 x 5	LNSOB052500C	LNSOC041119	LNSOB054066C	LNSOC050300
3-3/4 to 4	WHIT	1-3/4°	2-1/4 x 5	LNSOB044049C	LNSOC044050	LNSOB054005C	LNSOC053607
64 to 104 mm	METRIC COARSE	1-1/2°	1-1/2 x 5	LNSOB039793E	LNSOC062977	LNSOB040931E	LNSOC063309
105 to 133 mm	METRIC COARSE	1°	1-1/2 x 5	LNSOB039791E	LNSOC054178	LNSOB040932E	LNSOC063307
136 to 168 mm	METRIC COARSE	3/4°	1-1/2 x 5	LNSOB039792E	LNSOC054179	LNSOB053753E	LNSOC063306
2-1/2 to 3	TAPER PIPE	3/4°	2-1/4 x 5	LNSOB039484G	LOC039499	-	-
3-1/2 to 4	TAPER PIPE	1/2°	2-1/4 x 5	LNSOB039482G	LOC039499	-	-
4-1/2 to 6	TAPER PIPE	1/2°	2-1/4 x 5	LNSOB039481G	LOC039499	-	-
2-1/2 to 3	STR. PIPE	3/4°	1-3/64 x 4	LNSOB052498H	LNSOC052294	-	-
3-1/2 to 4	STR. PIPE	1/2°	1-3/64 x 4	LNSOB052496H	LNSOC052232	-	-
4-1/2 to 6	STR. PIPE	1/2°	1-3/64 x 4	LNSOB052497H	LNSOC052293	-	-

K Chaser holder and chaser setting gage numbers that have the "L" prefix indicates that they are stocked items. Numbers that are preceded by the "LNS" prefix indicates that they are non-stock items.



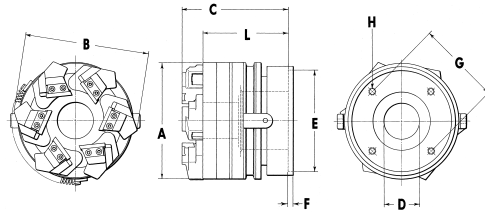
# Specifications

## "R" & "RX" Lanco

Landis Solutions LLC  
 360 South Church Street  
 Waynesboro, PA 17268-2610  
 Toll Free:  
 USA: +1.800.358.3500  
 Fax: +1.888.718.2922  
 Canada: +1.888.828.6340  
 e-mail: [info@Landis-Solutions.com](mailto:info@Landis-Solutions.com)

### 40 RX LANCO Specifications

Weight—Lbs.	133
Weight—Kgms.	60.3



### 40 RX LANCO Dimensions

Dimensions	Inches	mm
A	10	254.0
B†	—	—
C**	9-11/16	246.1
D-Standard*	3-1/8	79.4
E	8.750	222.2
F	7/16	11.1
G	7-1/4	184.1
H	5/8 U.N.C.	—
L	7-7/16	188.9

\*\* "C" Dimension based upon the use of standard, maximum range Chaser Holders. For correct dimension when using oversize or any other, please contact Landis Engineering Department.  
 \* Maximum bore - 5-1/8"  
 † "B" Dimension depends on application of Chaser Holders, For exact dimension, specify holders used and contact the Landis Engineering Department.

### 40 RX LANCO Chaser Holders

Range Inch – (mm)	Chaser Size	Coarsest Pitch Thrds. Per In. – (mm)		Maximum Thread Length Inch – (mm)
1-7/8 to 2-1/2 – (47 to 64 mm)	15/16 x 2-1/8	8 – (3 mm)		7-1/2 – (190.5 mm)
2-1/2 to 3-1/2 – (64 to 89 mm)	15/16 x 2-1/8	8 – (3 mm)		7-1/2 – (190.5 mm)
3-9/16 to 4-1/2 – (90 to 114 mm)	15/16 x 2-1/8	8 – (3 mm)		7-1/2 – (190.5 mm)
4-9/16 to 5-1/2*** – (116 to 128 mm)	15/16 x 2-1/8	8 – (3 mm)		7-7/8 – (200 mm)
5 to 6 – (128 to 152 mm)	15/16 x 2-1/8 or 1-1/4 x 2-3/4	8 – (3 mm)		2-1/8 to 4-1/2* – (54 to 114 mm*)
6 to 7** – (153 to 178 mm**)	15/16 x 2-1/8	8 – (3 mm)		1 to 4-1/2* – (25.4 or 114 mm*)
7-1/8 to 7-3/4** – (181 to 197 mm**)	15/16 x 2-1/8	8 – (3 mm)		1-3/8 to 3* – (35 to 76 mm*)
7-5/8 to 8-1/4** – (194 to 209 mm**)	15/16 x 2-1/8	8 – (3 mm)		1-3/8 to 3-1/4* – (38 or 83 mm*)
8-1/8 to 8-5/8** – (206 to 219 mm**)	15/16 x 2-1/8	8 – (3 mm)		1-1/2 to 3-1/16* – (38 to 78 mm*)
8-3/4 to 9-1/4** – (222 to 235 mm**)	15/16 x 2-1/8	8 – (3 mm)		1-3/8 to 2-5/8* – (35 or 67 mm*)
13/16 to 9/16†† – (11 to 14 mm††)	1-1/2 x 4	6 – (4 mm)		
5/8 to 2-1/4†† – (16 to 179 mm††)	1-1/2 x 4	5 – (5 mm)		

\* Requires special built-up chaser holders.

\*\* Recommended for non-ferrous materials only.

\*\*\* 5-1/2" diameter limited to 1-3/8" maximum thread length.

† Note – 40 RX chaser holders are furnished against order to thread specific diameter and pitch combinations within these limitations. Often, more than one diameter and pitch combination can be threaded with a particular set of holders depending upon the helix angles involved.

Please refer complete information on diameter and pitch combinations for engineering review.

†† Special holders for pipe wrench jaw threading.

### R LANCO Oversize Chaser Holders

Range Inch – (mm)	Chaser Size	Coarsest Pitch Thrds. Per In. – (mm)		Maximum Thread Length Inch – (mm)
<b>3/4 – 6R</b>				
13/16 to 1-1/4 – (20 to 33 mm)	15/16 x 2-1/8	10 – (2.5 mm)		1-3/8 – (33 mm)
1-5/16 to 2 – (33 to 52 mm)	15/16 x 2-1/8	12 – (2.0 mm)		1-3/16 to 2-7/8* – (30 to 73 mm*)
2-1/8 to 2-3/4 – (52 to 72 mm)	15/16 x 2-1/8	12 – (2.0 mm)		1-3/16 to 2-5/8* – (30 to 67 mm*)
<b>1" – 8R</b>				
1-1/8 to 2-1/8 – (28 to 54 mm)	1-3/64 x 3	8 – (3 mm)		1-7/16 to 2-3/16* – (36 to 55 mm*)
2-1/4 to 3 – (58 to 76 mm)	1-3/64 x 3	8 – (3 mm)		2-3/8* – (60 mm*)
<b>1-1/2" – 12R</b>				
1-5/8 to 2-5/8 – (42 to 68 mm)	1-3/64 x 4	7 – (3.5 mm)		1-5/8 to 4-1/8* – (41 to 104 mm*)
2-3/4 to 3-3/4 – (72 to 96 mm)	1-3/64 x 4	7 – (3.5 mm)		1-1/2 to 2-5/16 – (38 to 59 mm*)
<b>2-1/2" – 20R</b>				
2-1/8 to 3-1/8 – (56 to 80 mm)	1-3/64 x 4	7 – (3.5 mm)		1-7/8 or 3-1/4* – (47 or 82 mm*)
3-1/4 to 4-1/4 – (82 to 108 mm)	1-3/64 x 4	7 – (3.5 mm)		2 or 2-3/4* – (51 or 70 mm*)
<b>4" – 32R*</b>				
<b>6" – 48R*</b>				

\* Requires special built-up chaser holders.

\*\* Contact Landis Engineering Department for information.

† Note – Oversize chaser holders are furnished against order to thread specific diameter and pitch combinations. Often more than one diameter and pitch combination can be threaded with a particular set of oversize chaser holders depending upon the helix angles involved. Also, the thread must be within the coarsest pitch and maximum thread length limitations of the chaser holders. Please refer complete information on diameter and pitch combinations for engineering review.